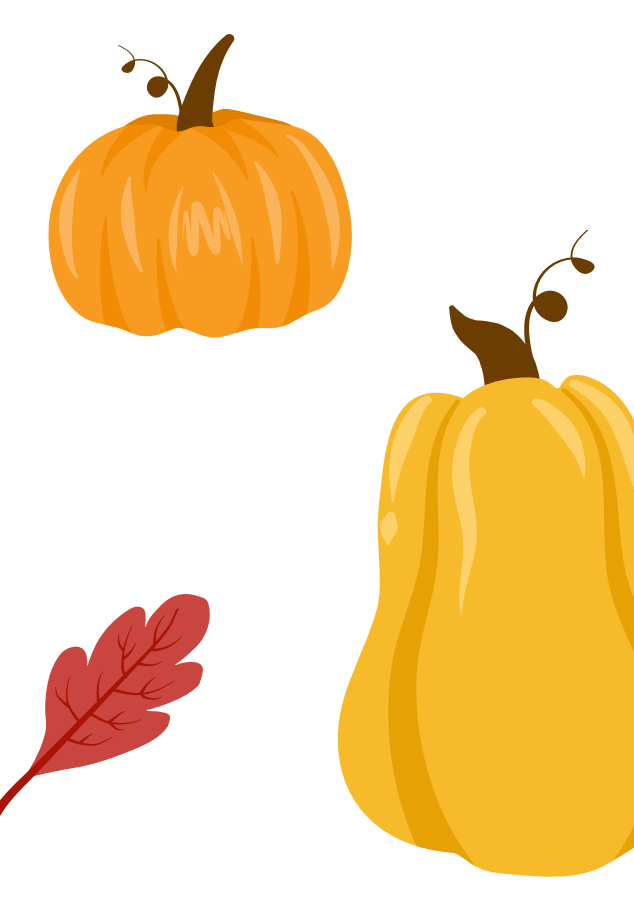




# NOVEMBER



## Tampa Dining Events

**SUN 03** **Daylight Savings Time**  
Set your clocks back an hour!

**TUE 05** **Birthday Celebrations**  
12pm-2pm • Juniper Dining

**WED 06** **Produce of the Month Sampling**  
12pm-2pm • The Hub

**MON 11** **Veteran's Day**  
Visit [www.usfdining.com](http://www.usfdining.com) for hours of operations

**WED 20** **Fall Under the Palms**  
11:30pm-2pm • On Top of the Palms

**THU 21** **Hub Harvest**  
6pm-9pm • The Hub

**THU 28** **Thanksgiving Day**  
Visit [www.usfdining.com](http://www.usfdining.com) for hours of operation



**November 28th-29th: Campus Closed**

Visit [www.usfdining.com](http://www.usfdining.com) for hours of operation

**Produce of the Month: Pear**





# NOVEMBER



## St. Pete Dining Events

**SUN 03** **Daylight Savings Time**  
Set your clocks back an hour!

**MON 11** **Veteran's Day**  
Visit [www.usfdining.com](http://www.usfdining.com) for hours of operations

**WED 13** **Birthday Celebrations**  
Lunch • The Nest

**MON 18** **Nest Giving**  
6pm-9pm • The Nest

**THU 21** **Produce of the Month Sampling**  
6pm-9pm • The Nest

**THU 28** **Thanksgiving Day**  
Visit [www.usfdining.com](http://www.usfdining.com) for hours of operation



**November 28th-29th: Campus Closed**

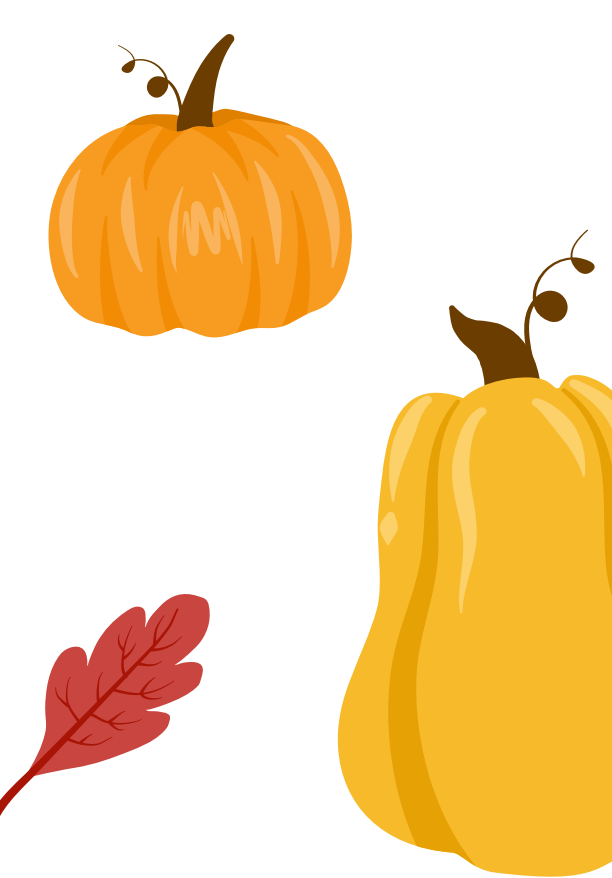
Visit [www.usfdining.com](http://www.usfdining.com) for hours of operation

**Produce of the Month: Pear**





# NOVEMBER



## Sarasota Dining Events

**SUN 03** **Daylight Savings Time**  
Set your clocks back an hour!

**WED 06** **Birthday Celebrations**  
12pm-2pm • Juniper Dining

**MON 11** **Veteran's Day**  
Visit [www.usfdining.com](http://www.usfdining.com) for hours of operations

**TUE 19** **Friendsgiving Lunch**  
Lunch • Nectar & Co

**THU 28** **Thanksgiving Day**  
Visit [www.usfdining.com](http://www.usfdining.com) for hours of operation



**November 28th-29th: Campus Closed**

Visit [www.usfdining.com](http://www.usfdining.com) for hours of operation

**Produce of the Month: Pear**

